

OUR COMMITMENT

RENOWNED QUALITY SYSTEMS AND METROLOGY EQUIPMENT

Penn United is ISO9001 certified, ITAR registered, GIDEP registered, and FDA registered to meet quality requirements of our customers and we excel at maintaining our customers confidentiality throughout our business processes.

WORK FORCE DEVELOPMENT AND OUR EMPLOYEE OWNERS

Our employees are not only our most important asset, but are committed to the company success through their ownership. As a result Penn United is devoted to developing the talents, wellness, and lives of our employees.

FINANCIAL STABILITY

Through productivity improvements, cost containment, and sustainable financial controls Penn United is prepared to grow during eventual shifts in the global economy.



Award for Manufacturer of the Year 2013

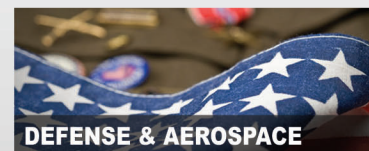
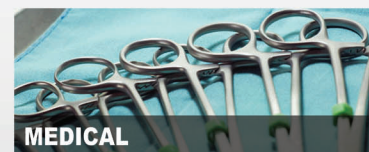
Penn United Technologies, Inc.
799 North Pike Road
Cabot, PA 16023
Phone: (724) 352-1507
www.pennunited.com
sales@pennunited.com



MANUFACTURING SOLUTIONS. ABSOLUTE INTEGRITY. EMPLOYEE OWNED.



PRECISION MANUFACTURING SOLUTIONS



A BRIEF HISTORY



Founded in 1971 by Carl Jones, Robert Becker, and Charles Barton in a family garage, Penn United is now a worldwide source of high precision manufacturing services.

Establishing Penn United as a Christian company, our founders set forth two principles as the foundation for all our actions and interactions: we exist to glorify God and we will honor His Word, the Holy Bible, in all we do.

In 1974 as a gesture of "giving back" to its employees, Penn United was established as an ESOP where each employee would receive partial ownership of the company in the form of shares of stock.

Today we continue along the path set before us with pride in our work and honesty with our relationships.

Initially a tool-and-die shop, Penn United has over the years become so much more. In response to our customers needs we have added many new capabilities to our list of offerings. This ever expanding list includes:



OUR MANUFACTURING CAPABILITIES

VERTICAL INTEGRATION

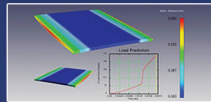
From software simulation, design for manufacturing assistance and prototyping to build and full production validation, Penn United offers a large array of vertically integrated services to provide customers a value added solution. The crossover of our business groups allows Penn United to utilize the best available resources to serve our customers' needs.

• DESIGN FOR MANUFACTURING



Assist in the product design phase to decrease up front prototype costs, reduce costly changes down the road, and shorten your time to market schedule.

• DIE SIMULATION SERVICES



Our talented design engineering team can identify failure and fatigue issues with die components as well as finished parts before any manufacturing processes have been performed.

• PROTOTYPING & ADDITIVE MANUFACTURING



Services include: design of your new product, working with your design development team, or develop the manufacturing strategy to meet the goals for your new product.

• TOOLING



Provide precision tooling solutions from low to high volume production, repairs, and assemblies of high precision components.

• HIGH PRECISION STAMPING DIES



Expert skills and comprehensive knowledge needed to produce the highest quality stamped parts, giving you durability and maintaining the utmost level of accuracy.

• METAL STAMPING



Complex flat or formed parts, steel laminations, bandolier pins, continuous reel stamping, prototype stamping, and other stamped metal and non-metal products.

• AUTOMATED EQUIPMENT



Wide range of capabilities that include custom-designed, build-to-print and complex systems for your specific manufacturing application needs.

• ASSEMBLY



Improve your supply chain management efficiencies with the skill, dexterity, dedication to process improvement, as well as meeting stringent deadlines with our onsite capabilities.

• PRECISION MACHINING



Tight tolerance machining of critical-application components of various materials.

• PRECISION GRINDING



High precision grinding for critical-application components of various materials.

• CARBIDE & METAL ASSEMBLIES



Joining of tungsten and silicon carbide to a metal component is used to address manufacturing issues regarding fabrication, assembly, and cost.

• TUNGSTEN & SILICON CARBIDE



Manufacturer of tungsten and silicon carbide components engineered for rigorous applications ranging from erosion and corrosion resistance to high impact strength.

• REEL-TO-REEL PLATING



Processes include: electro polishing, electro cleaning, copper, nickel, palladium, palladium/nickel, gold, silver, tin 100%, lead free tin, tin/lead (various alloys).

• METAL FINISHING SERVICES



Processes include: aqueous and solvent based cleaning, both citric and nitric passivation, plating and coating, and an in-house lab and testing area.

• PARKER MAJESTIC GRINDERS



Precision grinding machines and remanufacturing of precision grinders.

• MANUFACTURING TRAINING



At our L.I.G.H.T. training center or your facility.